



# Evidence Recovery from SSD

**PC-3000 SSD**  
DRIVE THE CHANGE

## NAND CHIPS ID:

```

CHANNEL 0:
CE 0: LOGIC CHIP .....
CE 1: LOGIC CHIP .....
CE 2: LOGIC CHIP .....
CE 3: LOGIC CHIP .....

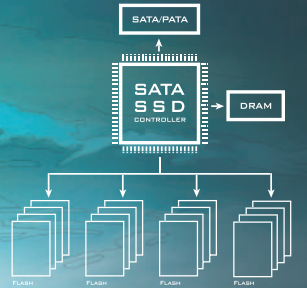
CHANNEL 3:
CE 0: 0x2CB8044B .....
CE 1: 0x2CB8044B .....
CE 2: 0x2CB8044B .....
CE 3: 0x2CB8044B .....
>
  
```

## SSD DETECTED

```

TECHNOKEY ..... : DETECTED!
CAPACITY ..... : 256 GB
NUMBER OF CHANNELS ..... : 8

CHANNEL 0:
CE 0: LOGIC CHIP .....
CE 1: LOGIC CHIP .....
CE 2: LOGIC CHIP .....
CE 3: LOGIC CHIP .....
  
```



```

CHANNEL 1:
CE 0: 0x2CB8044B .....
CE 1: 0x2CB8044B .....
CE 2: 0x2CB8044B .....
CE 3: 0x2CB8044B .....

CHANNEL 2:
CE 0: 0x2CB8044B .....
CE 1: 0x2CB8044B .....
CE 2: 0x2CB8044B .....
CE 3: 0x2CB8044B .....
>
  
```

## The leading-edge unique solution for recovering SSD in technological mode

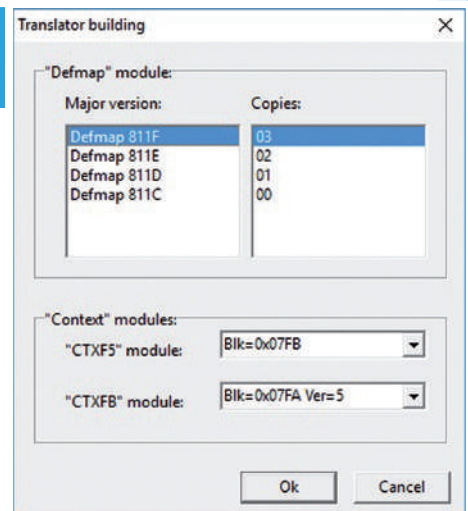
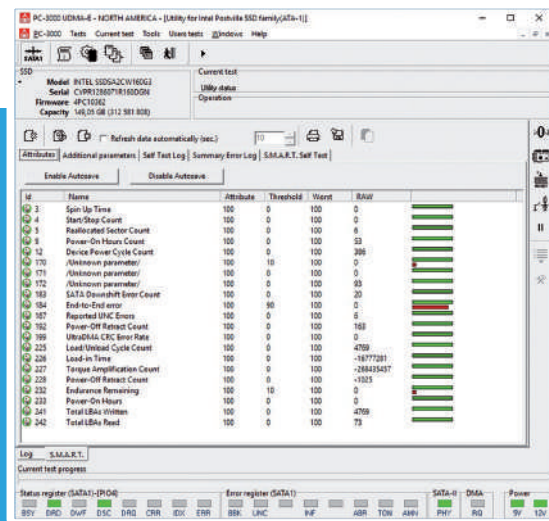
The PC-3000 SSD Software is a professional product intended for restoring SSD and recovering data from them.

To recover evidence from SSD you need one of the following Systems:

- ▶ PC-3000 Express SSD/Ultimate System
- ▶ PC-3000 UDMA SSD/Ultimate System
- ▶ PC-3000 Portable SSD/Ultimate System

## Key Features for SSD Diagnosis, Repair and Data Recovery

- ▶ Diagnose an SSD in technological mode
- ▶ View the logs of hidden defects (P-page, G-page)
- ▶ Perform low-level formatting to hide the discovered defects
- ▶ Reset the logs and S.M.A.R.T. parameters
- ▶ Search for the damaged memory chips
- ▶ Provide direct access to the content of memory chips so that you do not need to unsolder the chips
- ▶ Emulate the translator operation in order to get an access to user data
- ▶ Load the microcode into the drives RAM
- ▶ Read and write the content of the SSD ROM
- ▶ Verify and restore the SSD service information
- ▶ View the password and reset the password that was earlier set on the SSD
- ▶ Turn off background processes in the SSD to prevent data damage
- ▶ Work with the Data Extractor





	PC-3000 SSD	PC-3000 SSD Extended
Compatibility with the PC-3000 hardware-software systems	PC-3000 Express, PC-3000 UDMA	PC-3000 Portable III
Supported manufacturers:	ADATA, AMD, Apacer, Corsair, Crucial, DEXP, GOODRAM, INDILINX, Intel, KingDian, KingSpec, Kingston, Lexar, Lite-On, Micron, OCZ, Patriot, Plextor, PNY, QUMO, RevuAhn, Samsung, SanDisk, Seagate, Silicon Power, Smartbuy, Transcend, Western Digital, etc. More manufacturers are added with the updates.	
Supported interfaces:		
SATA	✓	✓
M.2 SATA*	✓	✓
mSATA*	✓	✓
AHCI*		✓
NVMe*		✓
M.2 PCIe*		✓
PCIe x16*		✓
Apple Macbook*		✓

\*The appropriate adapter from ACE Lab or third-party vendors is required.

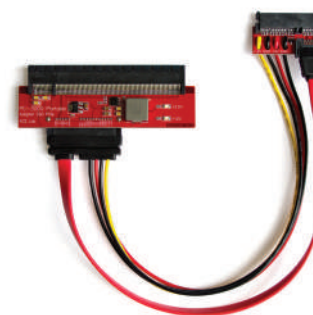
## Breakthrough: PCIe SSD Support in the PC-3000 Portable III



M.2 PCIe NVMe/AHCI SSD & M.2 SATA SSD adapter



PCIe NVMe/AHCI Adapter for Apple Macbook SSD



PCIe x16 SSD Adapter